

Dynascales.com

Powered by Weighing & Inspection

 **BAUCOTECH**
A BAUCOTECH COMPANY



DYNASCALE DynaScrew weigh dosing systems

www.dynascales.com - www.weighingandinspection.eu/dynamic

Specialist in dynamic weighing systems

This reputation has primarily been built on the thousands of dynamic weighing systems that are installed worldwide. However, what many people may not know is that Weighing & Inspection has been applying the knowledge and experience of dynamic weighing for years in the weighing of chain conveyors and screw conveyors, for example.

In essence, the same components are used for a screw weigh system as for a belt weigh system, namely:

- Weigh frame with precision load cell
- Speed sensor
- Weigh processor

Applications

- Bulk materials that generate dust during free fall and can be effectively transported by a screw
- Locations with limited vertical space

The belt speed sensor

The WIS526 digital speed transducer is the most reliable and accurate speed transducer ever developed for use with belt weighers. By directly connecting the transducer to the belt reversing roller or a return roller, you are guaranteed an accurate belt run reading. No wheels running over the belt, preventing problems caused by product accumulation or belt slip.

The weighing frame

Its very compact design and robust construction keeps the Loadblock weighing frame fully in line with the conveyor frame.

This one-piece or two-piece weighing frame is fully assembled at the factory and is quick and easy to install and integrate into the conveyor belt. The weighing frame is designed to provide additional support and reinforcement to the belt structure, thus minimising deviations.

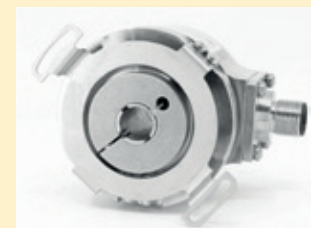
The Loadblock weighing frame is due to its specific design insensitive to vibration, moisture and product accumulation, unlike many other systems.

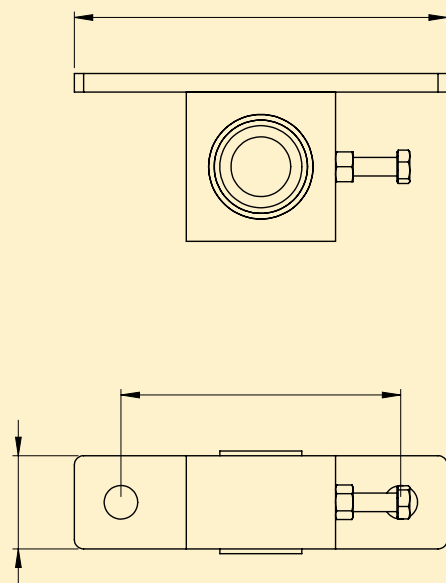
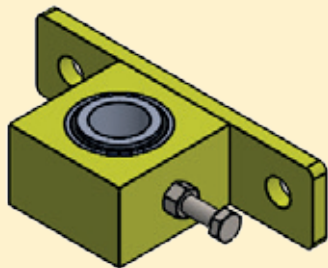
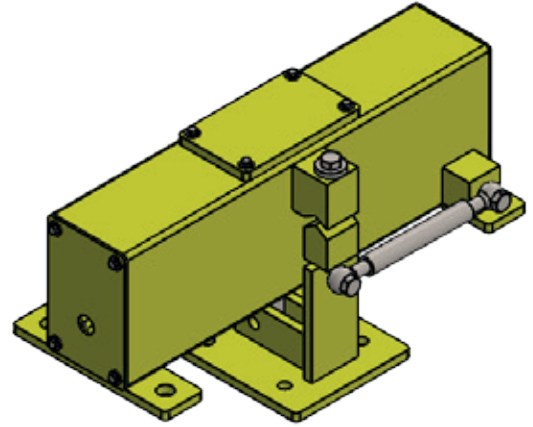
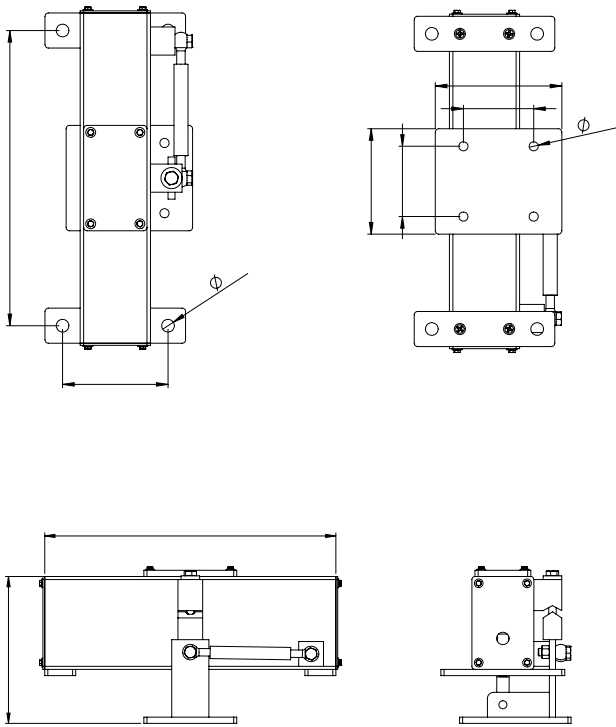


WI301 Weighing indicator,
Field - version



Digital speed sensor WIS526







Specifications

Specifications

DynaScrew weigh dosing systems

Belt speed sensor WIS526

| | |
|----------------------|---|
| Type | Digital encoder with hollow shaft |
| Mounting | Directly with a coupling on the output shaft of the reversing drum or a return roller |
| Housing | RVS housing, IP67 |
| Mounting accessories | Shaft with mounting arm |
| Weight | Approx. 500 g |

Type WI301

| | |
|-------------------------|--|
| Display | Alphanumeric, 5" colour display |
| Calibration | Zero points, zero point tracking, weights, with known quantity of product |
| Optional communication | mA, profinet, profibus, Ethernet TCP/IP,... |
| Power supply | 110 VAC, 240 VAC |
| Digital inputs | Up to 3 |
| Digital outputs | Up to 4 |
| Housing | Field mount IP69K (228 x 214 x 124 mm) or panel mounting, IP69K (241 x 180 x 47 mm) |
| Temperature range | -10°C to +40°C |
| Approved version (OIML) | Available, class 2 |

Weighing & Inspection

Head Office: Brielstraat 112 - 9990 Maldegem - Belgium - T. +32 50 71 09 20 - F. +32 50 38 25 75 - info@weighingandinspection.eu
 Chaussée de Wavre 362 - 1390 Grez-Doiceau - Belgium - T. +32 10 84 83 90 - F. +32 10 84 83 99
 Netherlands Office: Nikkelstraat 45 - 4823 AE Breda - Netherlands - T. +31 850 441 822